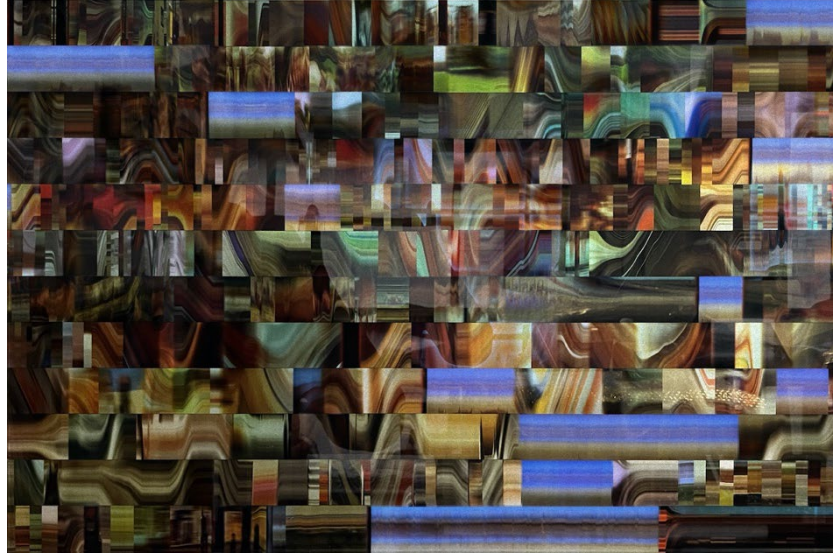


Dr Sam Burford
Postcards from Latent Space
14th September – 12th October 2024



Ways of Seeing Western Cultural Aesthetics Face Mounted C-Type Print on Acrylic,
Edition of 7 +1 AP, 54.1 x 81 cm

A solo exhibition of new work by the British artist Dr Sam Burford will be on show at Fiumano Clase, St James, London from 14th September until the 12th October 2024.

Within his multidisciplinary practice, London based artist Dr Sam Burford incorporates a series of traditional and contemporary production technologies. These range from photography and painting to generative code, image synthesis and 3D printing.

This exhibition includes new painterly renditions of his de-temporalised cinematic works, transforming filmic traces into strokes of oil paint on canvas, fulfilling the artist's long standing fascination to bring the masterworks of cinema to the established traditions of fine art.

As an extension of his postdoctoral research into the history of image synthesis, Burford has shifted focus to the extraordinary creative potential of Latent Space - a place where humankind's entire cultural record is in the process of being established and which will eventually form an unprecedented cultural object that will be accessible to all. He sees this as an open, spontaneous, involuntary, multinational project akin to humanity's collective effort to map the human genome.

Burford proposes that the current fascination with Artificial Intelligence and Machine Learning will eventually subside, and we will be left with the notion of 'Latent Space' - a place where 'everything and anything will endlessly combine, revealing the uncanny world of the post-human imaginary'.

FIUMANO CLASE

Burford describes the present moment as the beginning of Post Human Art, a period akin to the 1820s - the moment when photography was first invented. He suggests, 'Just as photography introduced the concept of the 'optical unconscious' and psychoanalysis disclosed the 'intellectual unconscious', so the compressed data structures of Latent Space provide the means to explore humanity's collective cultural unconscious'.

Postcards from Latent Space maps a trajectory from Burford's established practice of visualising cinematic spacetime, to works that factor the artist's sense of Latent Space as an imaginary place. The result of this investigation is a series of research outputs; cinematic and painterly objects that explore the artistic possibilities that this emergent paradigm offers, introducing a physical, material engagement with the normally intangible experience of digital forms.

For example, in the painting *Figures* (2024), Burford forges a hybrid post-digital work that transforms the output encoding from Latent Space into a unique physical handcrafted oil painting on canvas.



Figures, Oil on canvas, 43.3 x 30.1 cm

The exhibition will also present the UK premiere of a short film, *Postcards from Latent Space* (2024), introducing a cornucopia of fragile animated agents, the nascent inhabitants of Latent Space. Burford describes these characters as 'fledgling entities emerging from the diffracting worlds of Latent Space, incomplete versions of ourselves, personas borne out of the conceptualisations of the authors Mary Shelley and Jorge Luis Borges and the American feminist theorist and physicist Karen Barad'.

Burford speculates that Latent Space will ultimately transform all of human culture, with the potential to democratise creativity and artistic expression for all.

FIUMANO CLASE

Notes:

Location: Fiumano Clase, 1st Floor, 40-41 Pall Mall, London SW1Y 5JG

www.fiumanoclase.com

Exhibition Dates:

14th September – 12th October 2024

Gallery Opening Hours:

Tuesday – Friday 11am – 6pm, Saturday – 12 noon – 4pm.

All other times by appointment

About the Artist

Dr Sam Burford is a multidisciplinary British artist currently based in London. He completed an MA in Fine Art in 2007 at Chelsea School of Art and was awarded his PhD in 2019 from the same institution.

Burford's ever-evolving practice is rooted in fascination with the moving image. His ongoing research has expanded to explore cutting edge technology and its potential within contemporary art practice.

About Fiumano Clase

Five years after its formation the gallery relocated to Pall Mall in central London.

Now in the seventh year, the central ethos of Fiumano Clase remains firmly committed to working collaboratively with artists, giving them the time, space and opportunity to develop their artistic practice unhindered by commercial pressures.

The gallery represents a number of artists internationally, embracing a range of different practices from painting and sculpture to photography, installation, video and performance art.

Gallery Directors Francesca Fiumano and Andrés Clase met in the art world a few years before founding Fiumano Clase and forming a family. Together they have over 40 years of experience in the arts. Each has completed a Masters in History of Art and are active supporters of the wider art-world, beyond the gallery itself.